

THE GISCI

ENDORISING EMPLOYER DESIGNATION



RECOGNIZING YOUR COMMITMENT

You're committed to your people and to developing their skills. Plus, you want to empower your team to help drive your organization's success. Your support of the GISP® (Certified GIS Professional) certification program increases the value of the GISP Certification within your organization and reflects your commitment to improving the strength of your team and to expanding the geospatial community. The GIS Certification Institute (GISCI) would like to recognize you for this support with the Endorsing Employer Designation.

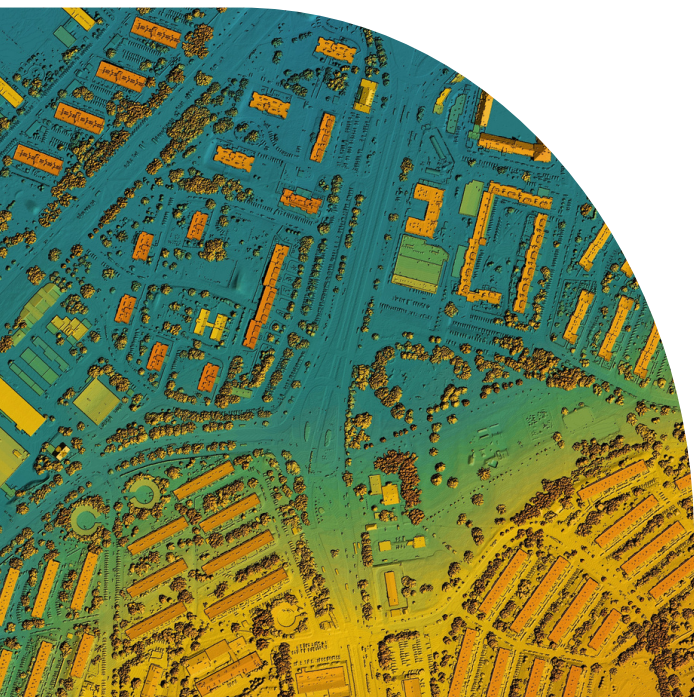
The Endorsing Employer Designation is awarded to organizations that demonstrate commitment to GIS Professionals and the GISP Certification process through your internal activities, programs, and policies. Endorsing Employers not only commit to GISP Certification for staff, but also to upholding the ideals of the GIS Certification Institute.

The GISCI Endorsing Employer Designation is available to all organizations -- public, private and commercial. There is no cost to obtain this designation. A list of GISCI designated Endorsing Employers can be found here.

Each approved GISCI Endorsing Employer Designation last three (3) years. With your permission, GISCI will display your organization logo on our website and provide you with a digital badge to display on your organization's website.

“ FACTOR's commitment to our employees as a GISCI Endorsing Employer ensures that our personnel have the skills to perform cutting-edge geospatial work at the highest level possible.”

**-Derek Bryant, Principal and GIS Director,
FACTOR, Inc.**



CONNECT WITH US

Visit our website: www.gisci.org Email us: info@gisci.org

THE GISCI

ENDORISING EMPLOYER DESIGNATION



Becoming an Endorsing Employer

For an organization to receive the GISCI Endorsement Designation they must meet a minimum set of requirements as well as some (but not necessarily all) of the additional requirements. All organizations must meet the following industry-standard criteria:

CRITERIA?

- ➡ Encourage or require all GIS staff to have or obtain GISP certification during employment with the organization.
- ➡ Pay for initial GISP certification fees for candidates.
- ➡ Pay for ongoing GISP recertification fees for candidates.

APPLICATION

If your organization wishes to apply for the GISCI Endorsement Designation, please send an email to Tony Spicci, GISCI Executive Director, at tspicci@gisci.org requesting the designation.

The application should include the following:

- A cover letter on the organization's letterhead requesting the designation. The cover letter should include a primary contact who serves as the organization's GIS Director.
- A description of how the organization will adhere to the minimum qualifications and required criteria along with a summary of how the organization either currently meets or plans to meet one or more of the additional criteria. Please see an example document [here](#).
- An indication of support (signature) from the organization's GIS Director, HR representative and the GIS Director's supervising unit.

ADDITIONAL CRITERIA:

Organizations are strongly encouraged to meet one or more of the following criteria:

- Pay for ongoing specialized training.
- Pay for GIS-related continuing education courses.
- Tie compensation to GISP Certification (e.g., bonus, raises).
- Promotion criteria includes required GISP Certification.
- Provide support for ongoing activities to maintain certification (e.g., conference attendance and presentations, membership in professional societies).
- As an organization, strive to meet the ethical standards of the GIS Certification Institute and support their GISPs in meeting those standards.

REVIEW:

If the organization meets the qualifications and the review Committee approves the request, the GISCI will reach out for additional information to complete the process and schedule a 30-minute call to discuss the application.

** GISCI member organizations excluded from participation*