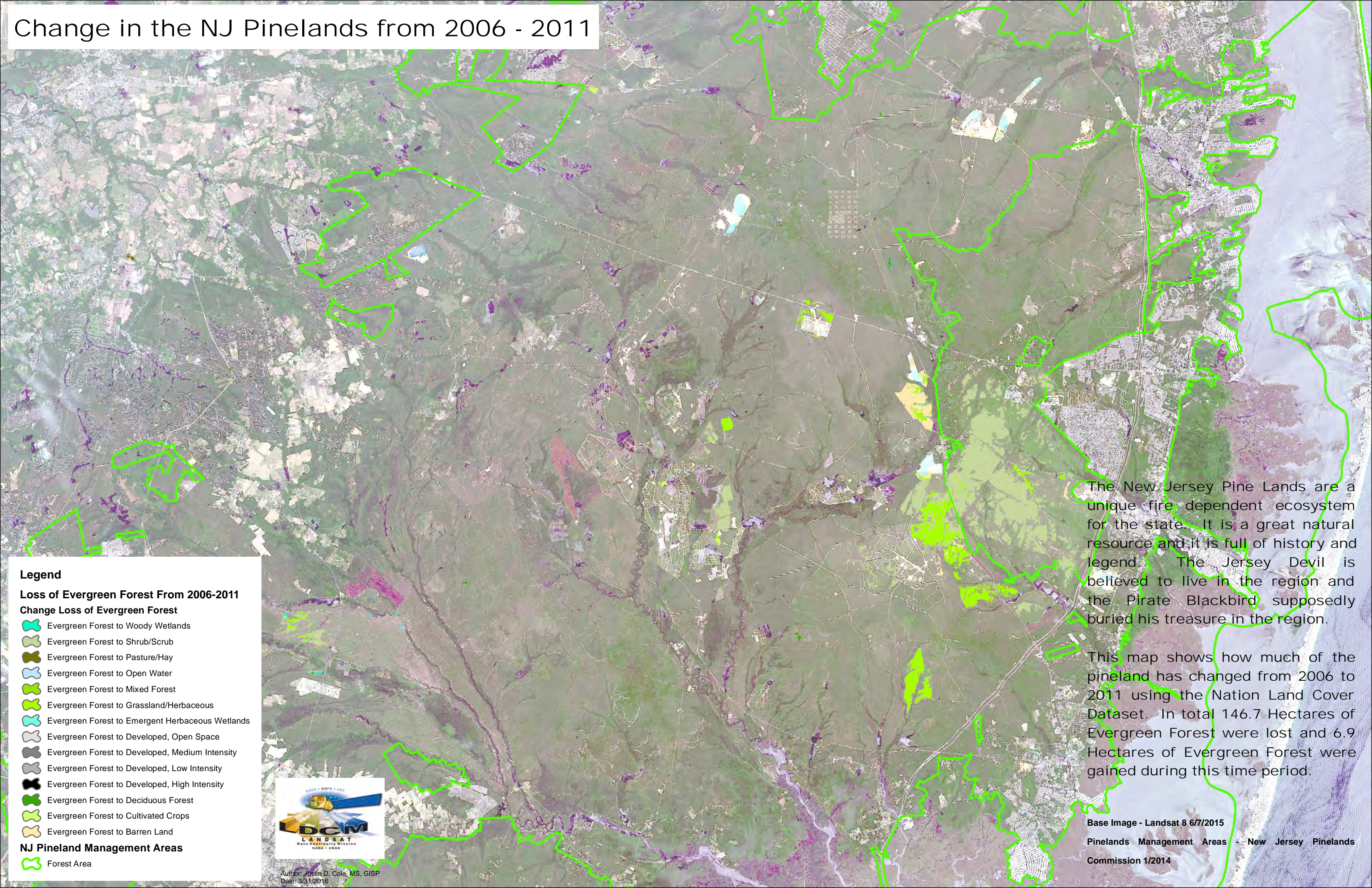


# Change in the NJ Pinelands from 2006 - 2011



**Legend**

**Loss of Evergreen Forest From 2006-2011**

**Change Loss of Evergreen Forest**

- Evergreen Forest to Woody Wetlands
- Evergreen Forest to Shrub/Scrub
- Evergreen Forest to Pasture/Hay
- Evergreen Forest to Open Water
- Evergreen Forest to Mixed Forest
- Evergreen Forest to Grassland/Herbaceous
- Evergreen Forest to Emergent Herbaceous Wetlands
- Evergreen Forest to Developed, Open Space
- Evergreen Forest to Developed, Medium Intensity
- Evergreen Forest to Developed, Low Intensity
- Evergreen Forest to Developed, High Intensity
- Evergreen Forest to Deciduous Forest
- Evergreen Forest to Cultivated Crops
- Evergreen Forest to Barren Land

**NJ Pineland Management Areas**

- Forest Area

The New Jersey Pine Lands are a unique fire dependent ecosystem for the state. It is a great natural resource and it is full of history and legend. The Jersey Devil is believed to live in the region and the Pirate Blackbird supposedly buried his treasure in the region.

This map shows how much of the pineland has changed from 2006 to 2011 using the Nation Land Cover Dataset. In total 146.7 Hectares of Evergreen Forest were lost and 6.9 Hectares of Evergreen Forest were gained during this time period.



Author: Justin D. Cole, MS, GISP  
Date: 3/31/2016

Base Image - Landsat 8 6/7/2015  
Pinelands Management Areas - New Jersey Pinelands  
Commission 1/2014