

GEORGE BUSH INTERCONTINENTAL AIRPORT IMPERVIOUS SURFACE STUDY

GISCI 2018 Map Contest

Map created by:
Shibbir Ahmed, 03/08/2018

An impervious surface is an area on the earth that impedes or prevents the flow of water into the soil. Impervious surfaces increase runoff volume, velocity, temperature, and pollutant loads. More often, they are a result of human development. Rooftops, parking lots, severely compacted soils, and even gravel roads are all considered impervious surfaces. Studies suggest that noticeable degradation to water bodies begins when watersheds reach just 10% imperviousness.

City of Houston Drainage Fee

Several Factors have contributed to the recent flooding in Houston area; but the biggest cause is the enormous amount of development in Houston over the years. On April 6, 2011, the City of Houston City Council passed a new city ordinance as part of the "Renew Houston" plan. This plan establishes a dedicated drainage and street renewal fund to provide for the enhancement, improvement and ongoing renewal of Houston's drainage and city streets. The City of Houston has about 6,000 miles of streets, 3,300 miles of storm sewers and 2,800 miles of roadside ditches. Well maintained drainage and streets are cornerstones of our Public Safety, Quality of Life, and Economic Development. George Bush Intercontinental Airport has 105,081,627 SF (2,412.3 Acres) impervious surface area. Airport impervious surface area is always changing due to development works in the airport. So, every year Impervious Surface Layer in geodatabase is updated to keep it accurate.

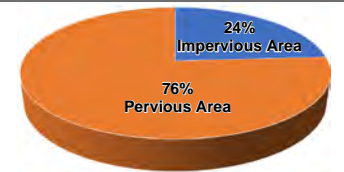
Source: www.rebuildhouston.org | City of Houston Ordinance No. 2011-254

Airport area at a glance

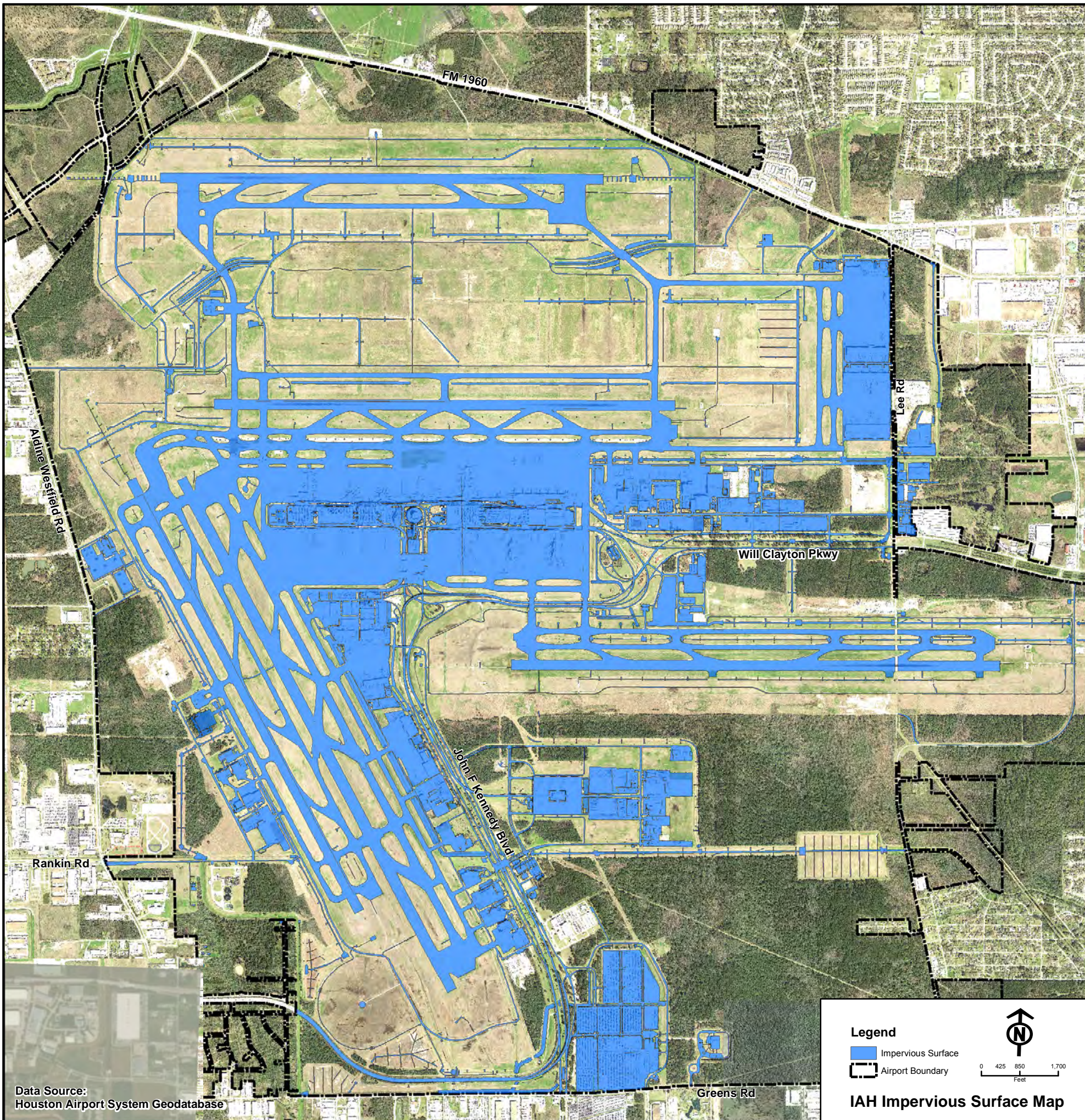
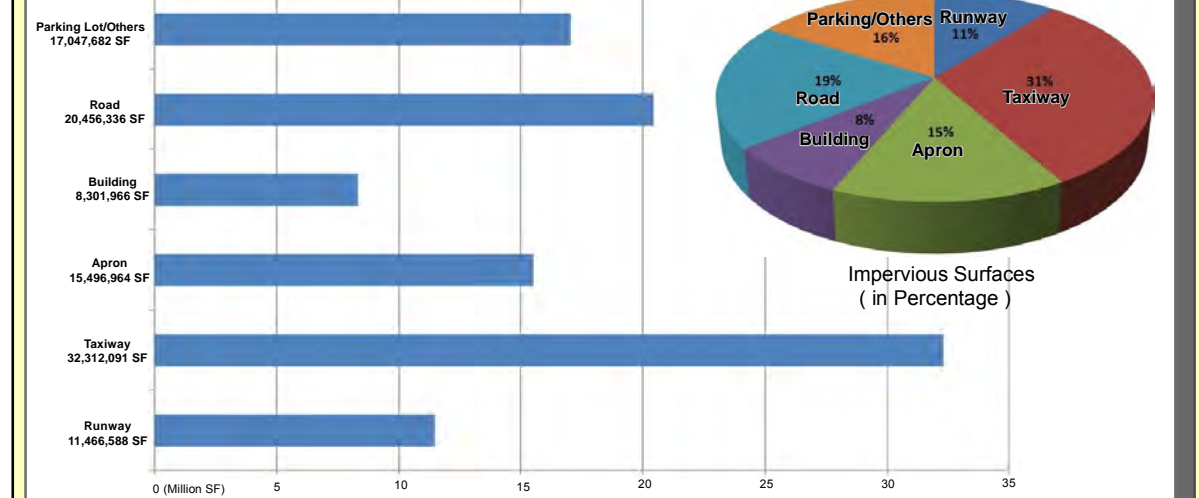
Total IAH Airport Area: 445,019,376 SF (10,216.24 Acres)

Total Impervious Surface: 105,081,627 SF (2,412.3 Acres)

Total Pervious Surface: 339,937,749 SF (7,803.9 Acres)



Impervious areas in the airport



Data Source:
Houston Airport System Geodatabase

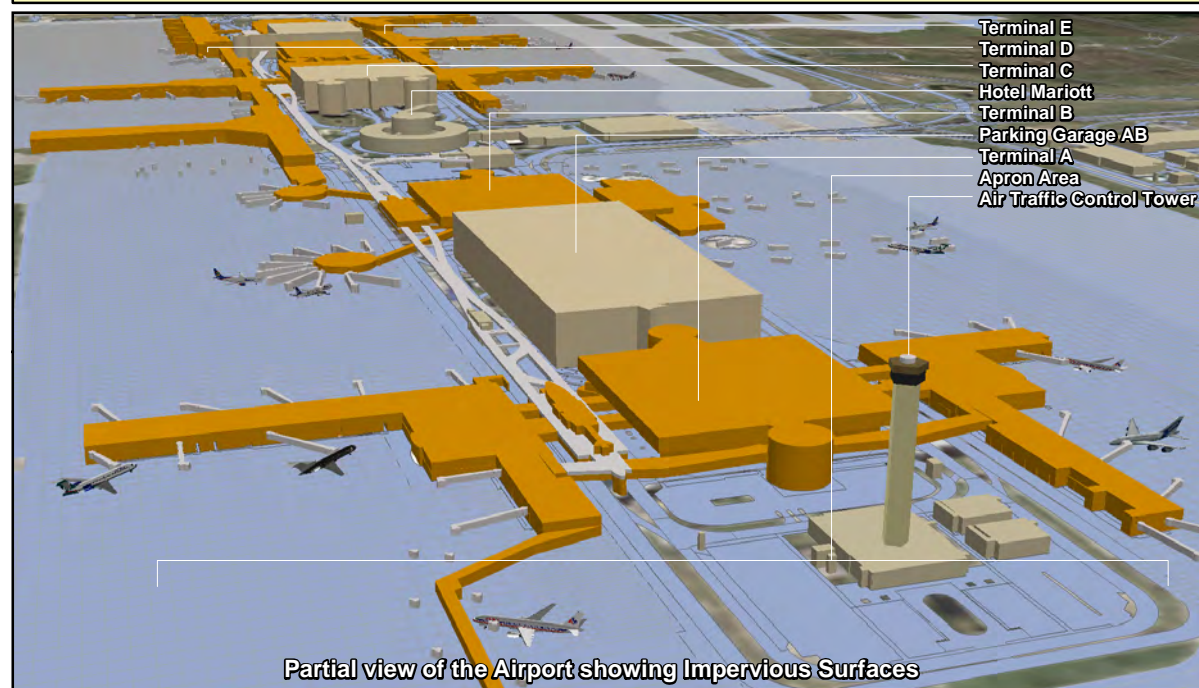
Legend

- Impervious Surface
- Airport Boundary



0 425 850 1,700
Feet

IAH Impervious Surface Map



Partial view of the Airport showing Impervious Surfaces

Path: Z:\Shibbir\IAH\GISCI_MapContest2018\IAH_Impervious_11x17.mxd