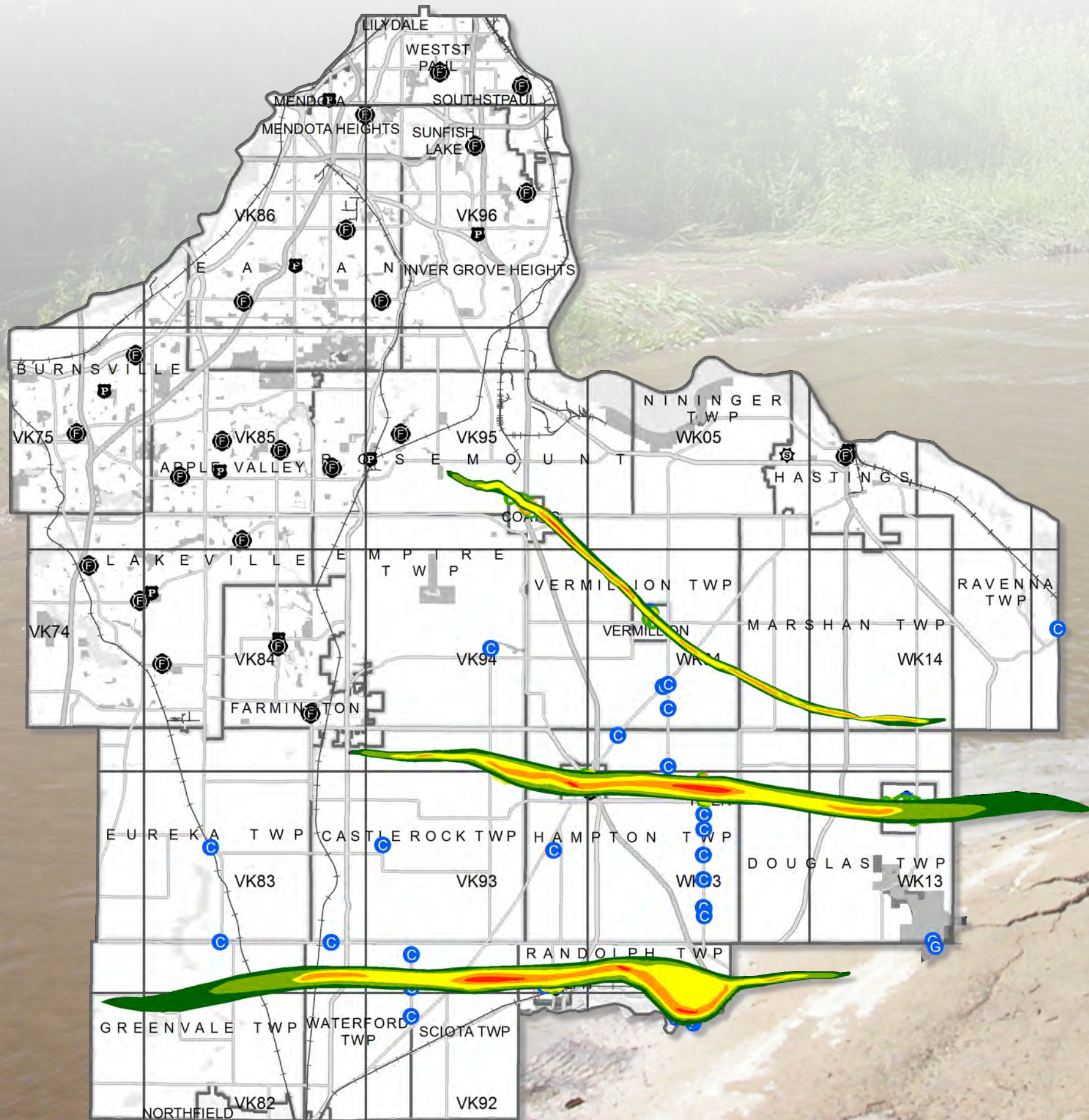


THIS IS A DRILL!



Damage Assessment

Scenario

THIS IS A DRILL!

At 1800 hours, the skies became very dark in southern and western Dakota County. Within minutes, much of the County is experiencing heavy rainfall, hail and strong winds. The Dakota Communications Center became inundated with calls from the public reporting several large tornados in the southern part of the county which resulted in damaged buildings and injured people throughout the county. The Sheriff's office and local Rural Fire Departments are not able to keep up with the number of calls for service within their communities. Each smaller rural community has contacted the Dakota County Emergency Preparedness Coordinator requesting assistance. The Dakota County Emergency Preparedness Coordinator makes the decision to fully activate the County EOC and begins the notification process for opening the EOC at 8:00 a.m. the following morning.

THIS IS A DRILL!

Legend

Commercial Building Damage

- Inaccessible
- Affected
- Minor
- Major
- Destroyed

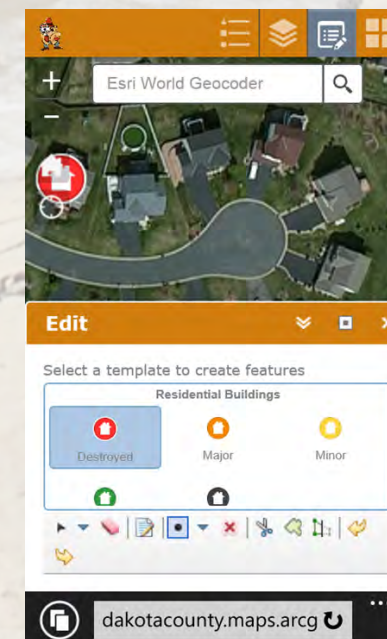
Residential Building Damage

- Inaccessible
- Affected
- Minor
- Major
- Destroyed

Public Facility Damage

- CAT A - Debris Removal
- CAT B - Protective Measures
- CAT C - Roads and Bridges
- CAT D - Water Control Facilities
- CAT E - Public Buildings
- CAT F - Public Utilities
- CAT G - Parks/Other

Damage Assessment Application



Building Officials use a web based Damage Assessment application to complete a thorough assessment and photograph a "home" that was "damaged" by severe weather. The data is immediately transmitted to the Emergency Operations Center for staff to evaluate.