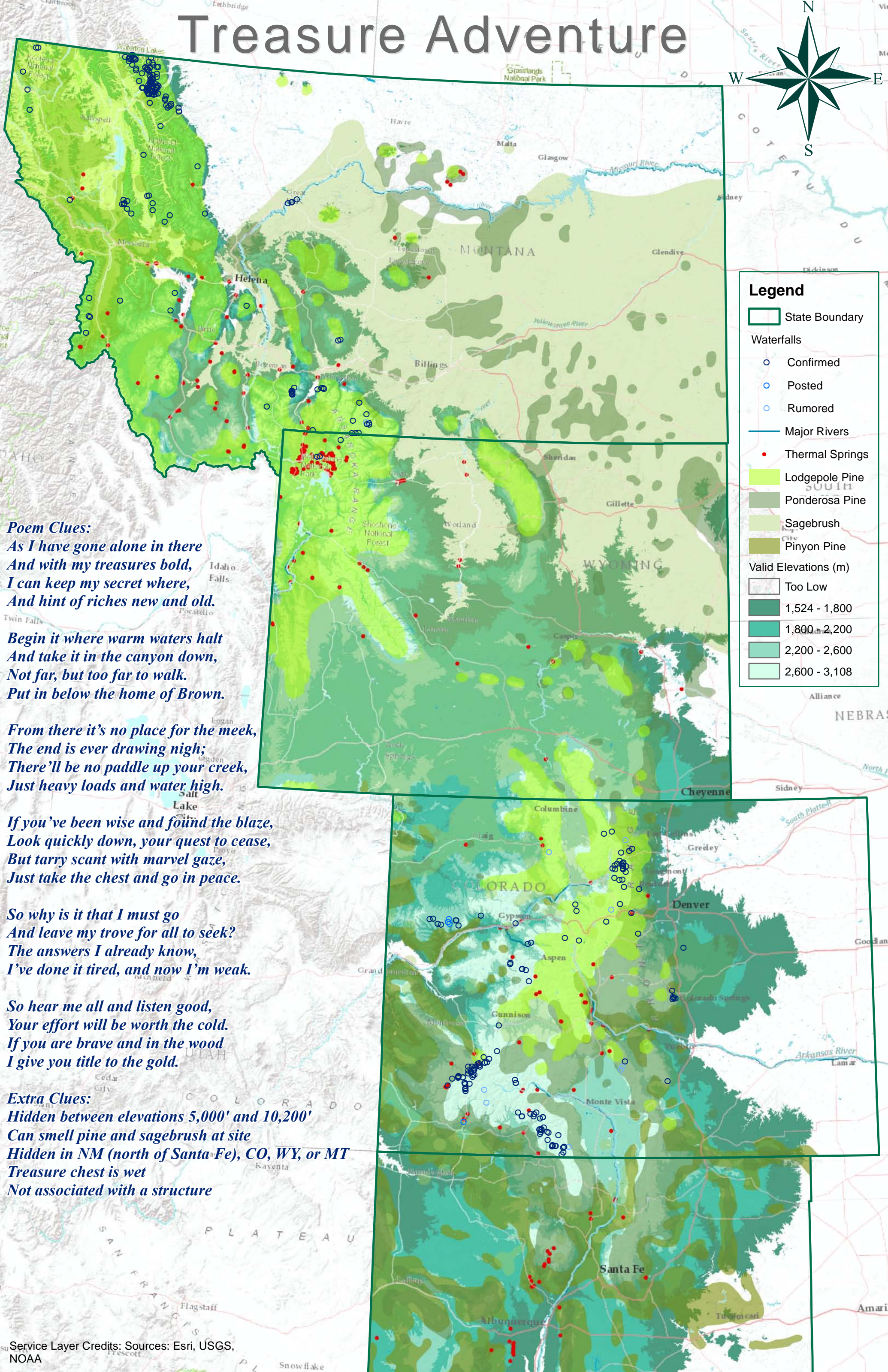


Treasure Adventure



Legend

- State Boundary
- Waterfalls**

 - Confirmed
 - Posted
 - Rumored

- Major Rivers
- Thermal Springs
- Lodgepole Pine
- Ponderosa Pine
- Sagebrush
- Pinyon Pine
- Valid Elevations (m)**

 - Too Low
 - 1,524 - 1,800
 - 1,800 - 2,200
 - 2,200 - 2,600
 - 2,600 - 3,108

Poem Clues:
*As I have gone alone in there
 And with my treasures bold,
 I can keep my secret where,
 And hint of riches new and old.*

*Begin it where warm waters halt
 And take it in the canyon down,
 Not far, but too far to walk.
 Put in below the home of Brown.*

*From there it's no place for the meek,
 The end is ever drawing nigh;
 There'll be no paddle up your creek,
 Just heavy loads and water high.*

*If you've been wise and found the blaze,
 Look quickly down, your quest to cease,
 But tarry scant with marvel gaze,
 Just take the chest and go in peace.*

*So why is it that I must go
 And leave my trove for all to seek?
 The answers I already know,
 I've done it tired, and now I'm weak.*

*So hear me all and listen good,
 Your effort will be worth the cold.
 If you are brave and in the wood
 I give you title to the gold.*

Extra Clues:
 Hidden between elevations 5,000' and 10,200'
 Can smell pine and sagebrush at site
 Hidden in NM (north of Santa Fe), CO, WY, or MT
 Treasure chest is wet
 Not associated with a structure